

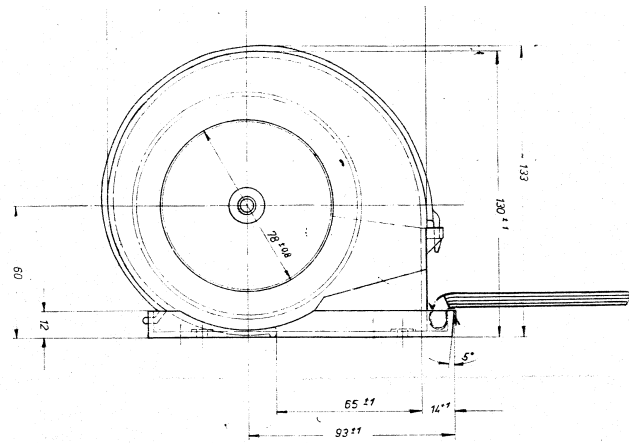
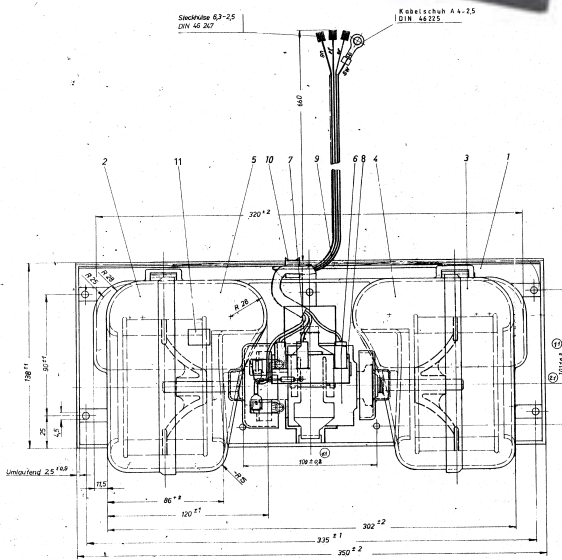
Behr F-puhallin

Tilausnumero

B 03961	Puhallin 24V, ilman vastusta
B 92 710 50 002	Puhallin 24V, kylmäjohdevastus
B 92 718 51 002	Puhallin 12V, keraaminen vastus, lämpös
B 92 719 50 002	Puhallin 24V, keraaminen vastus, lämpös.

Varaosat:

9ML 351 332-071	Vastus 2,4 Ω (B 9007281)
B 90 926 08 299	Vastus 24V, keraaminen

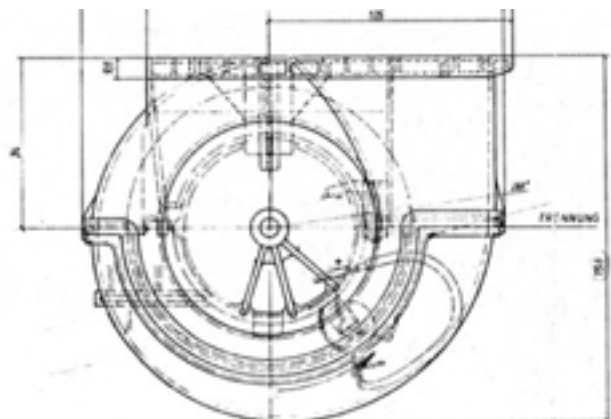
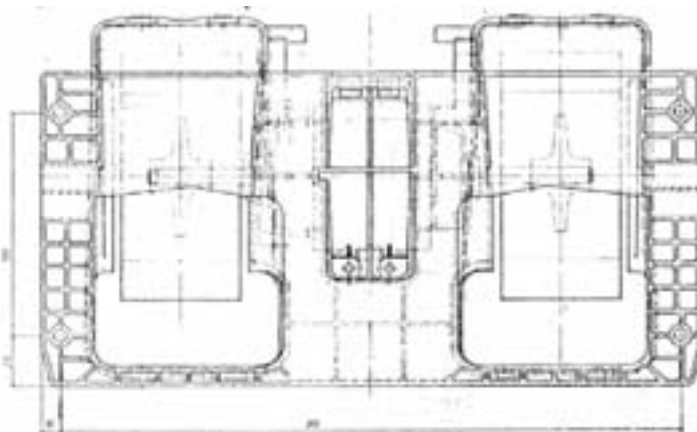


Behr D-puhallin

8EW 009 160-721	Puhallin 24V, kylmäjohdevastus (B 90 415 02 072)
B 90 415 02 272	Puhallin 12V, keraaminen vastus
B 90 415 02 282	Puhallin 24V, keraaminen vastus
B 90 415 02 283	Puhallin 24V, ilman vastusta
8EW 009 160-791	Puhallin 24V, MB O405 ja MAN F90
8EW 009 160-781	Puhallin 24V, Volvo FH/FM

Varaosat:

B 90 926 10 039	Vastus 12V, keraaminen
B 90 926 10 049	Vastus 24V, keraaminen
8EW 009 160-641	Moottori 24V ja siivet

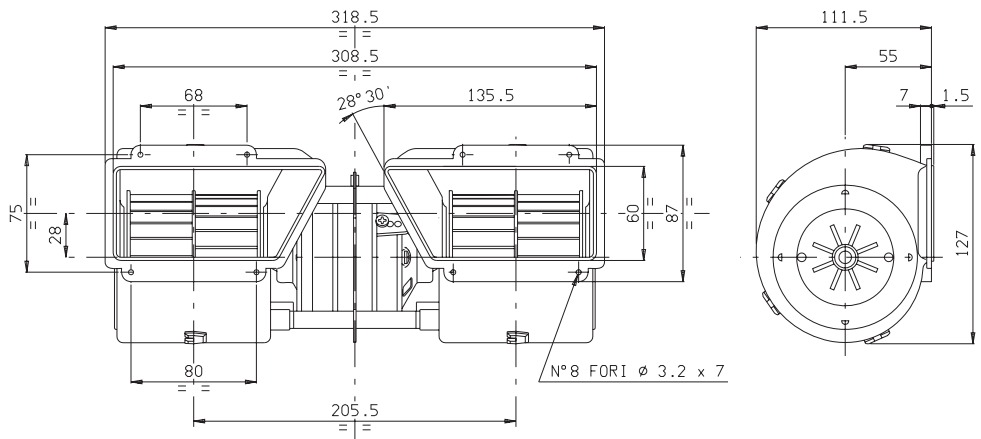




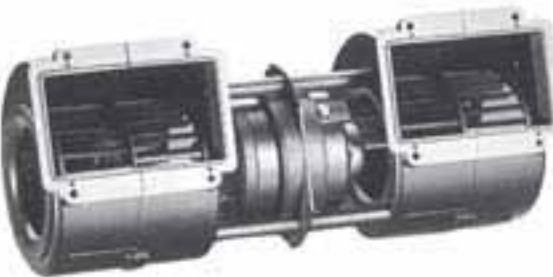
Spal 005-A45-02

Tilausnumero

L 20 100 00 754	Puhallin 12V 3-nop. 785m³/h 19,3A
-----------------	-----------------------------------



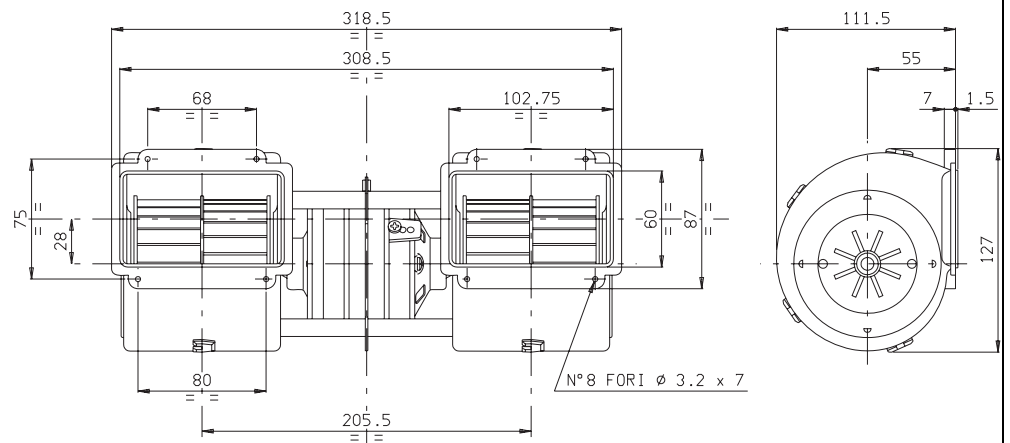
Spal 002-A/B45-02



L 20 100 00 201	Puhallin 12V 002-A45-02 600m³/h 13,5A
L 20 100 00 221	Puhallin 24V 002-B45-02 740m³/h 9,5A

Spal 002-B46-02

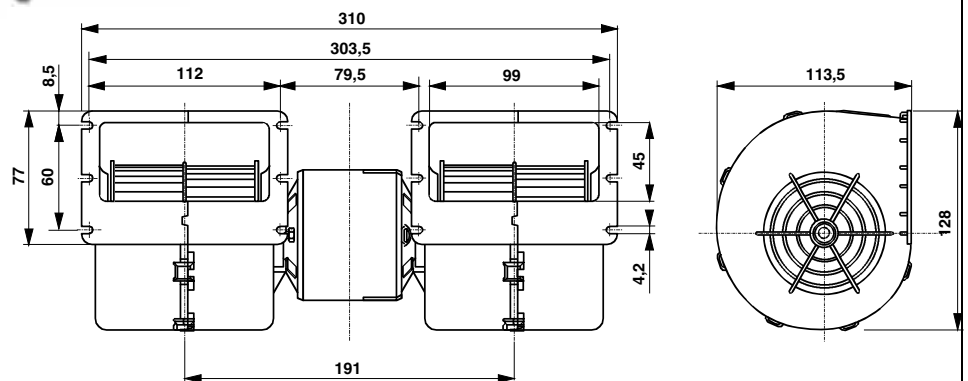
L 20 100 00 779	Puhallin 24V 002-B46-02 620m³/h 6,2A
-----------------	--------------------------------------



Spal 008-A/B45-02

Tilausnumero

L 20 100 00 720	Puhallin 12V 008-A45-02 - 1-nop., 750m ³ /h 17,5A
L 20 100 00 721	Puhallin 24V 008-B45-02 - 3-nop., 750m ³ /h 9,0A



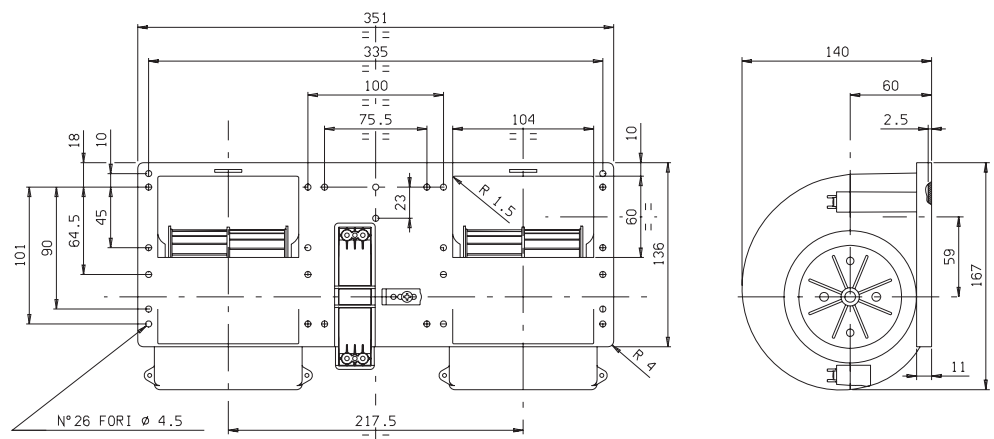
Spal 006-A/B45-22

L 20 100 00 364	Puhallin 12V, 3-nop., johtosarja - 1000m ³ /h 22,5A
L 20 100 00 363	Puhallin 24V, 3-nop., johtosarja - 1000m ³ /h 11,5A
L 20 100 00 356	Kuten ...363, paitsi ilman johtosarjaa (Middle life -moottori)
L 20 100 00 370	Vastus puhaltimeen ...363



Spal 006-B39-I-22

L 20 100 00 781	Puhallin 24V 006-B39-I-22 - 3 nop., 1160 m ³ /h 17A
-----------------	---





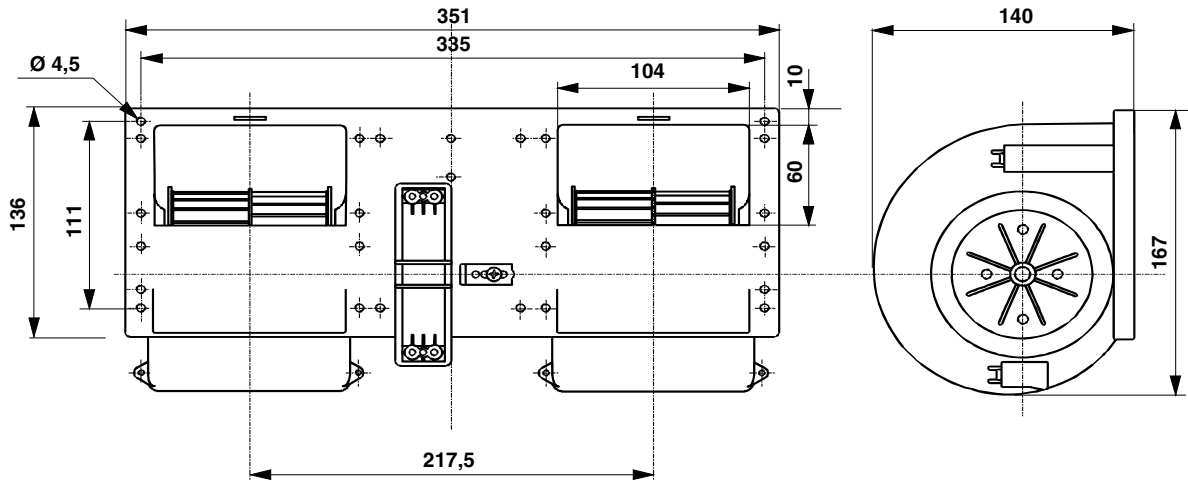
Spal 006-B46-22

Tilausnumero

L 20 100 00 746	Puhallin 24V 006-B46-22 850m ³ /h 8 A - 3-nop. (long life-moottori)
-----------------	---

Spal 006-B46-22 L310

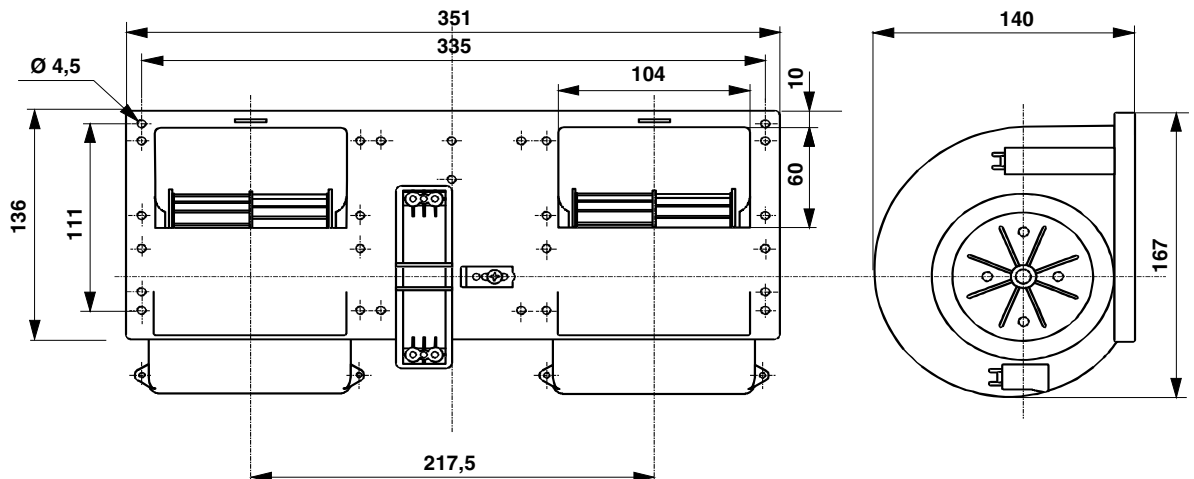
L 20 100 00 750	Puhallin 24V 006-B46-22 L310 880 m ³ /h 8,5A - 3 nop.
-----------------	---




Spal 006-B40-22



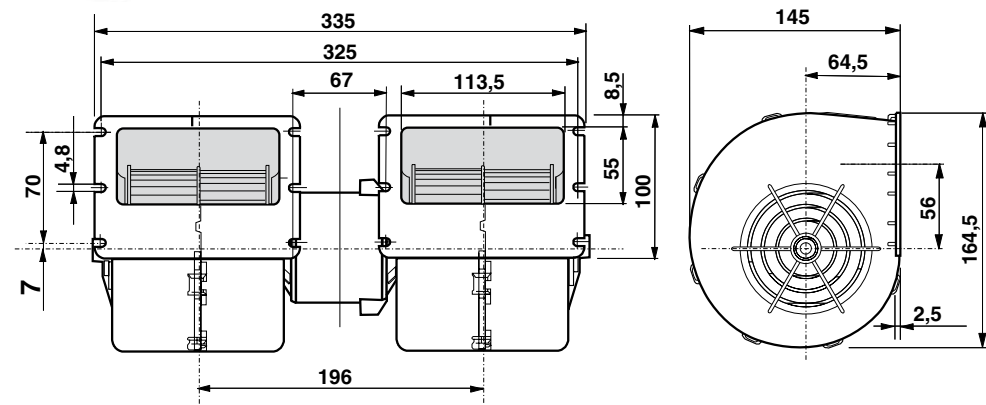
L 20 100 00 748	Puhallin 24V 006-B40-22 1000m ³ /h 13,5 A 3-nop. (heavy duty-moottori) mp. - DAF 95 kaikki mallit, DAF OE-nrot: 1294085 ja 0067270.
-----------------	---






Spal 009-B40-22 / 009-B40/I-22

Tilausnumero		
L 20 100 00 728	Puhallin 24V 009-B40-22	1050m ³ /h 13A - 4-nop. - Webasto W 915 24A.
L 20 100 00 770	Puhallin 24V 009-B40/I-22	
L 20 100 00 777	Puhallin 24V 009-B40-22	- 1050 m ³ /h 13A - 3 nop.

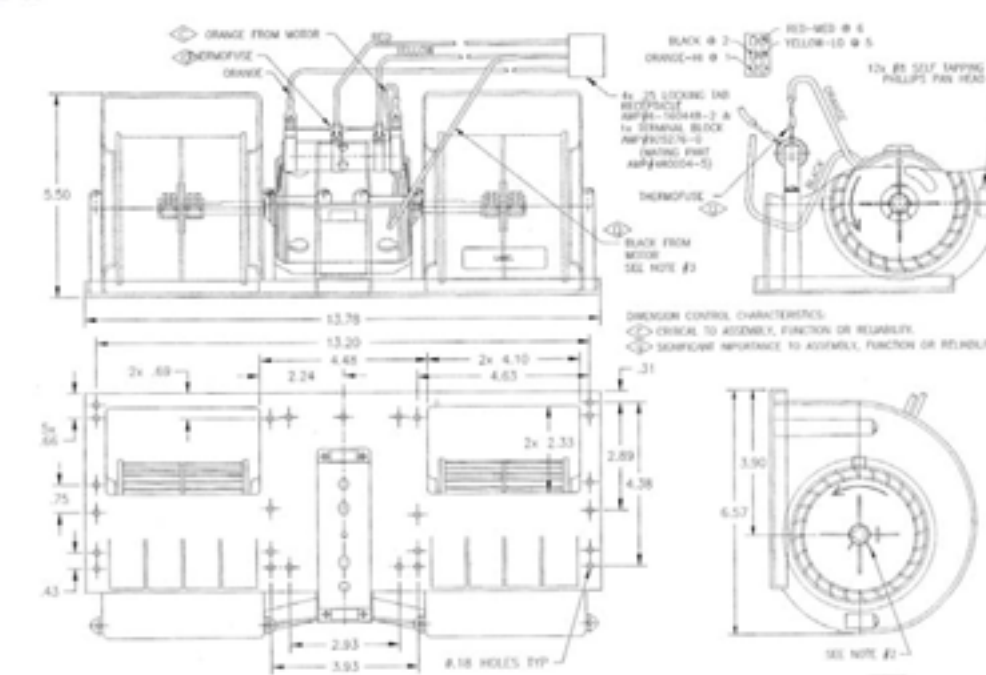


Technical drawing showing dimensions for Spal 009-B40-22 radial fan. Key dimensions include: 335 (total length), 325 (motor length), 67 (motor offset), 113,5 (fan length), 8,5 (fan offset), 70 (height), 4,8 (height offset), 7 (height offset), 196 (width), 145 (fan diameter), 64,5 (fan diameter offset), 56 (fan diameter offset), 164,5 (fan diameter offset), 2,5 (fan diameter offset).



Fasco FC1400

L 20 100 00 480	Puhallin FC1400 - 24V - Sisu E-mallin puhallin.
-----------------	--



Technical drawing showing dimensions and notes for Fasco FC1400 radial fan. Key dimensions include: 5,50 (height), 13,75 (width), 13,20 (width), 4,43 (width), 2x 4,10 (width), 4,63 (width), 2x 4,8 (width), 2,24 (width), 2,83 (width), 3,93 (width), 8,18 HOLES TYP (width), 3,90 (height), 6,57 (height), 2,89 (height), 4,38 (height), 31 (height), 12x Ø8 SELF TAPPING PHILLIPS PAN HEAD (height).

Notes:

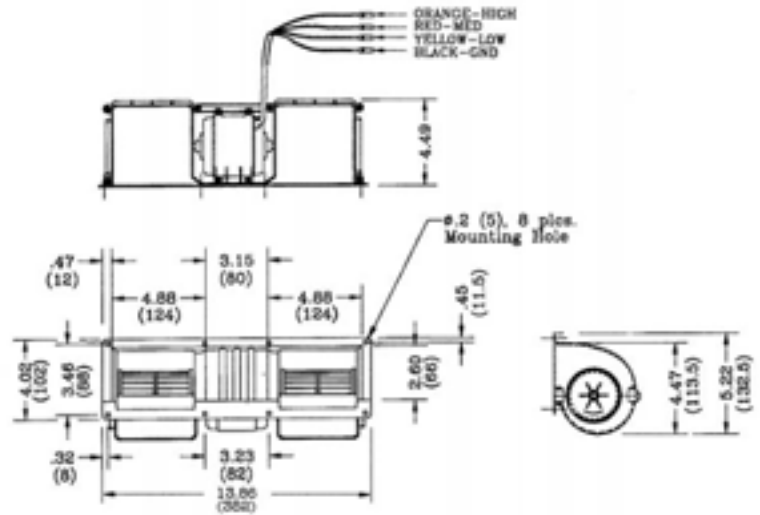
- BLACK # 2
- ORANGE-HE # 2
- RED-RED # 4
- YELLOW-LO # 5
- 4x Ø5 LOOKING THE REFERENCE APPROX. 2x 4,10 & 1x TERMINAL BLOCK APPROX. 13,20 (SEE PART APPROX. 4,5)
- THERMIFUSE
- BLACK FROM MOTOR SEE NOTE #3
- 12x Ø8 SELF TAPPING PHILLIPS PAN HEAD
- DIMENSION CONTROL CHARACTERISTICS:
 - CRITICAL TO ASSEMBLY, FUNCTION OR RELIABILITY
 - SIGNIFICANT IMPORTANCE TO ASSEMBLY, FUNCTION OR RELIABILITY
- SEE NOTE #2



MCC 505

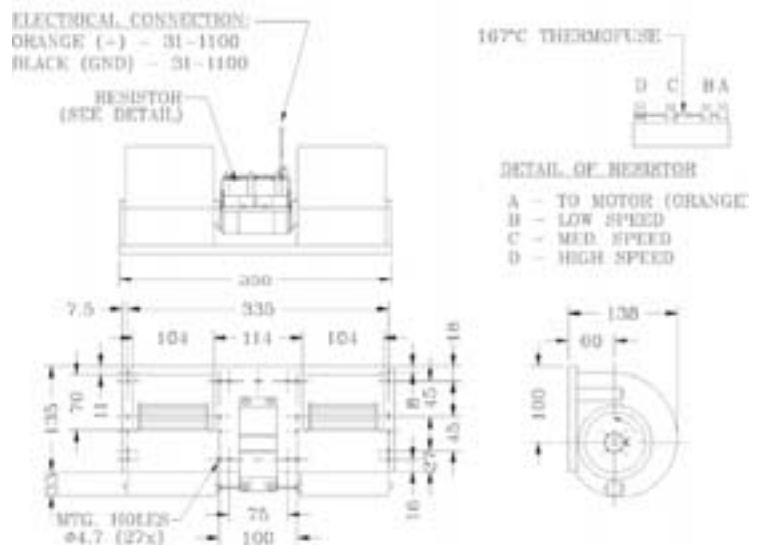
Tilausnumero

L 15 0503	Puhallin 505 - 12V 670 m³/h 14,0A
L 15 0504	Puhallin 505 - 24V 670 m³/h 7,0 A
L 25 0021	Puhaltimen siipi



MCC 515

L 15 1561	Puhallin 515 - 12V 1100 m³/h 30,0 A 3 nop
L 15 1562	Puhallin 515 - 24V 1100 m³/h 15,0 A 3 nop
L 15 1502	Puhallin 515 - 24V, ilman vastusta



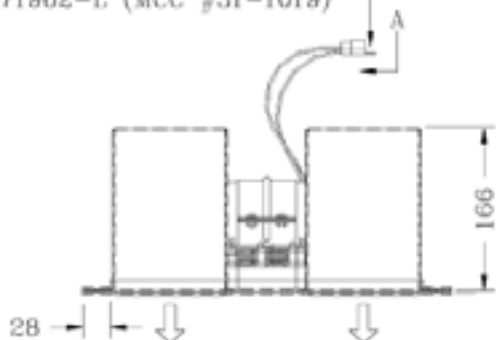
MCC 530

Tilausnumero

L 15 3001	Puhallin 530 – 12V 1320 m ³ /h 3 nop
L 15 3002	Puhallin 530 - 24V 1320m ³ /h 16,0A 3 nop



CONNECTOR PACKARD
#2984883 (MCC #31-1021)
WITH TERMINAL (2x)
#2971962-L (MCC #31-1019)



167°C THERMOFUSE



DETAIL OF RESISTOR

